

Mintin atao (voix 1)

Musique de Florence Pinvidic - 2009

Tempo : $\text{♩} = 60$



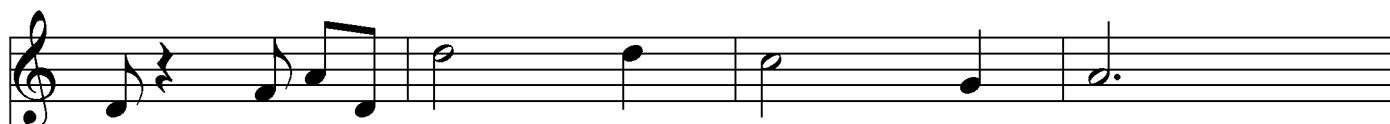
P			6' — 8	
T	3'	4' 5' 3'	7' — 7'	5' —

D d_m d_m D d_m d_m C c c D d_m d_m



P		7'	7' — 6'	5' 6'	
T	8' — 7'		7'	5' —	5' —

F f f C c c D d_m C D d_m d_m



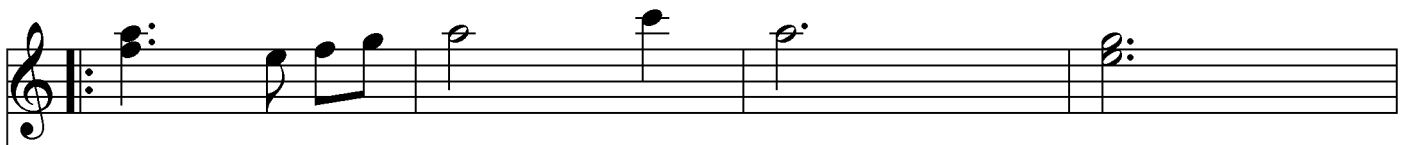
P			6' — 5'	
T	3'	4' 5' 3'	7' — 7'	5' —

D d_m d_m D d_m d_m C c c D d_m d_m



P		8'	8' — 7'	6'		8'
T	9' — 8'		7' —	7' —	:	7' 8' 7'

F f f C c c D d_m C D d_m d_m D D-E-



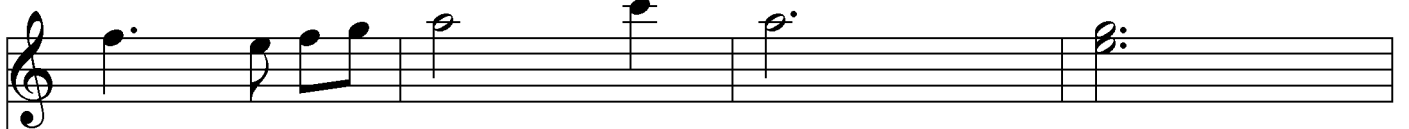
P	7' 8'	9'	8'
T	9' 8'	9'	9' 7'

F f f F f f A a_m a_m C c c



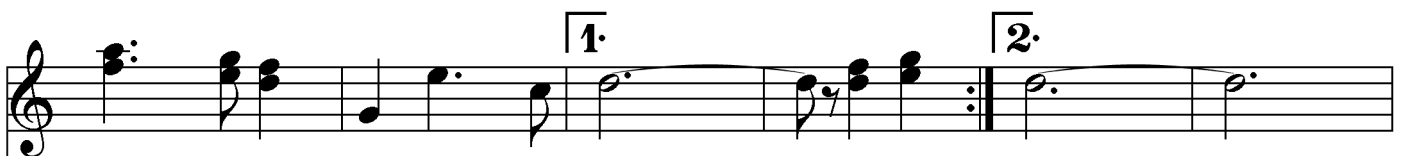
P	8' 8'	8' 7'	7' 6'	7'
T	7' 7'	7' 7'		7'

D d_m d_m D d_m d_m C c c C c c



P	7' 8'	9'	8'
T	8' 8'	9'	9' 7'

F f f F f f A a_m a_m C c c



P	8' 7'	5' 7'—6'	8' 7'	7'
T	9' 8'		7' 8'	7'

D d_m d_m C c c D d_m d_m D D—E— D d_md_m D d_md_m



Vous pouvez retrouver la voix 2 de "Mintin atao" dans le recueil

"Valses à deux voix" - Site web : DIOUFLO.COM